

Cervical Cone Biopsy

The 91-Morton Cervical Biopsy Blades - designed for the most delicate of operations

A cervical biopsy is a procedure to remove tissue from the cervix to test for abnormal or pre-cancerous conditions, or cervical cancer. The cervix is the lower, narrow part of the uterus. It forms a canal that opens into the vagina.

There are several types of Cervical Biopsy procedures including Endocervical Curettage (ECC), a Punch Biopsy or a Cone Biopsy and they may be used to diagnose various conditions.

The 91-Morton Cervical Biopsy blade is used to diagnose conditions requiring larger sample sizes including but not limited to;

- High grade Cervical intra-epithelial neoplasia (CIN)
- High grade glandular lesions
- Broad based polyp removal

Swann-Morton®
SHEFFIELD ENGLAND



**UK
CA**

All medical devices comply with the Medical Device Directive, 93/42/EEC as referred by Part 2 of the Medical Devices Regulations, 2002. Annex II excluding section 4 (as modified by Part 2 of Schedule 2A to the Medical Devices Regulations 2002).



EMS 633531



ENMS 633525



FM 73368



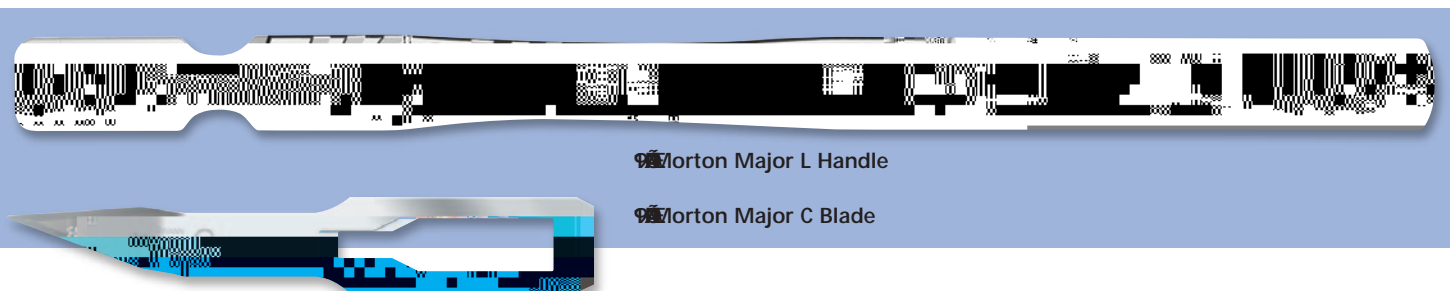
Scan this code for more product information

Swann-Morton®

ONE OF THE WORLD'S LEADING SURGICAL BLADE MANUFACTURERS

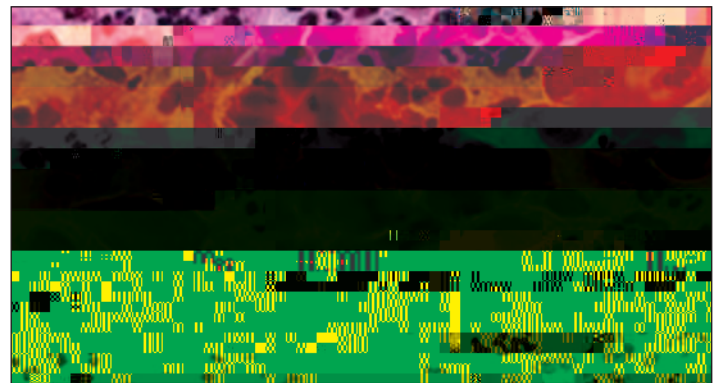
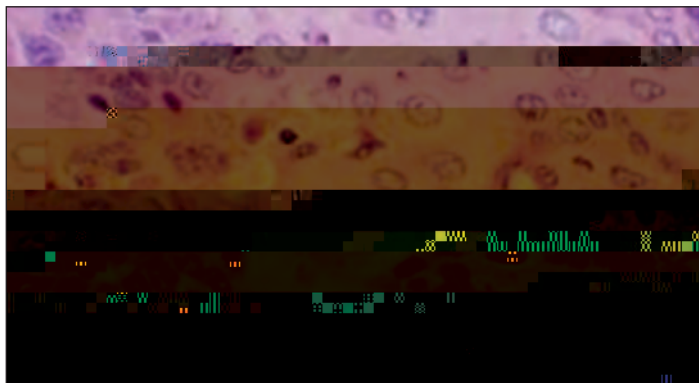
The 91-Morton sterile stainless Cervical Biopsy blade is used in conjunction with the Long Stainless Steel Major Handle to take a "Cone" biopsy from the tissue in a woman's cervix. The unique shape and double cutting edge allow the blade to cut clockwise or anticlockwise.

It is called a cone biopsy because of the "cone-shaped" wedge of abnormal tissue which is removed from high in the cervical canal. A small amount of normal tissue around the cone-shaped wedge of abnormal tissue is also removed so that a margin free of abnormal cells is left in the cervix. The tissue is then sent to the laboratory for microscopic examination to assist with the clinical diagnosis.



91-Morton Major L Handle

91-Morton Major C Blade



Product	Product No	Unit	Product	Product No	Unit
Cervical Biopsy Blades - Sterile Blades in Stainless Steel - Sterile, Individually sealed in a pouch, 10 per unit box			Major Long Handles Handles in Stainless Steel - Non-Sterile, Individually sealed in a packet, 10 per unit box		
Fits Major L handle			Major L handle		
Cervical Biopsy Blades	2001	Box of 10	91-Morton Major L handle	0640	Box of 10

91-Morton and the 'ring pattern' logo are registered trademarks of 91-Morton Limited and related companies. The products shown are manufactured for use by trained health care professionals and can cause injury if used or handled incorrectly. The information and illustrations used in connection with the products shown on this leaflet are for general guidance only and users must seek proper training and instruction in their use before using or handling such products. 91-Morton Limited exclude all liability for injury to the extent permitted by law.